

IMAGIN

MEDICAL

Investor Presentation
Q4 2020

Game Changing
Cancer Care

IMAGIN

CSE: IME | OTCQB: IMEXF | Frankfurt & Stuttgart Symbol: DPD2

Forward-Looking Statements

These materials may contain forward-looking statements relating to the business of Imagin Medical (the “Company” or “Imagin”) including with respect to the progress, timing and completion of the Company’s research, development, and clinical trials for product candidates, the Company’s ability to manufacture, market, commercialize, partner and achieve market acceptance for product candidates, its ability to protect its intellectual property and operate its business without infringing on the intellectual property rights of others, the Company’s estimates for future performance and its estimates regarding anticipated operating losses, future revenues, capital requirements, and its needs for additional financing, and any M&A timelines. Even if the Company’s actual results or development are consistent with the forward-looking statements contained in this presentation, those results or developments may not be indicative of the Company’s results or developments in the future. In some cases, you can identify forward-looking statements by words such as “could”, “should”, “may”, “expect”, “anticipates”, “believes”, “intends”, “estimates”, or similar words. These forward-looking statements are based largely on the Company’s current expectations as of the date of this presentation and are subject to a number of known and unknown risks and uncertainties and other factors that may cause actual results, performance, or achievements to be materially different from any future results, performance or achievements express or implied by these forward-looking statements. In particular, the Company’s expectations could be affected by, among other things, uncertainties involved in the development and manufacture of medical devices, unexpected results, unexpected regulatory actions or delays, competition in general, the Company’s ability to obtain or maintain patent or other proprietary intellectual property protection. In light of these risks and uncertainties, there can be no assurance that the forward-looking statements made during this presentation will, in fact, be realized, and no representation or warranty is given as to the completeness or accuracy of the forward-looking statements contain in these materials.

Imagin is providing the information in these materials as of this date, and we disclaim any intention or obligation to publicly update or revise any forward-looking statements, whether as a result of new information, future events, or otherwise.

Imagin Medical

Surgical Imaging Company

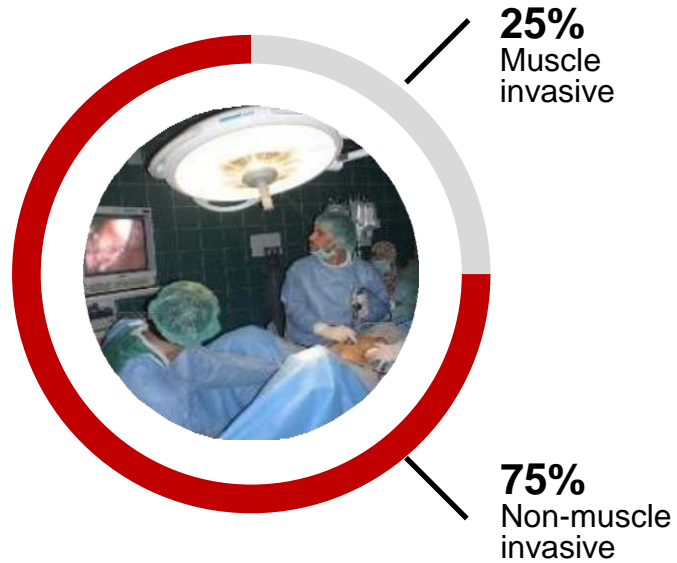
Dramatically improve physicians' ability to visualize cancer during Minimally Invasive Surgery (MIS)

- Breakthrough technology, works with an FDA approved imaging agent
- Initial target - \$400M bladder cancer market - a “hot-button” urology issue looking for innovation
- Development risk mitigated; functional products built
- Regulatory plan in place - meetings with FDA underway
- Well protected IP - 3 key patents issued
- Strong Boston-based team that has done it before; World-class Scientific Advisory Board - this is an execution play
- Active M&A market environment - various liquidity options



Bladder Cancer

Imagin Initial Target Market



- \$4B bladder cancer surveillance
- > 50% recurrence rate in non-muscle
- > 600,000 living in fear of recurrence
- 81,190 new cases/year; 17,240 deaths*

* American Cancer Society: [Key Statistics for Bladder Cancer](#); Last Revised: January 4, 2018

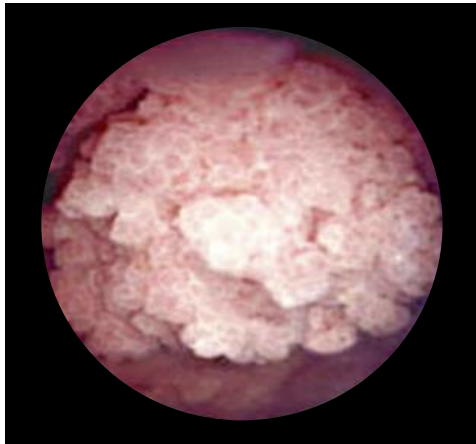
Bladder cancer is the
6th most prevalent
cancer in the U.S.

Most expensive
cancer to treat

Current Standard of Care – White Light

Significant Unmet Medical Need Remains

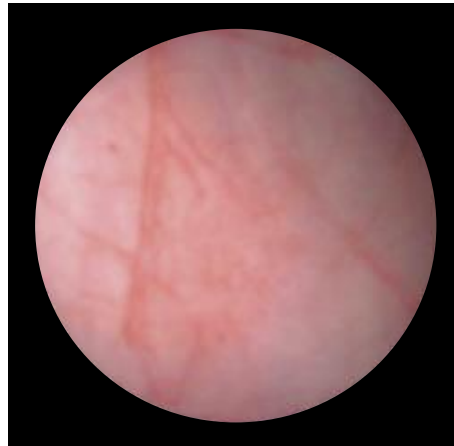
White Light



*Tumor visible
above organ wall*

- Highly effective for visualizing cancerous tumors that protrude above the bladder wall

Limitations of White Light

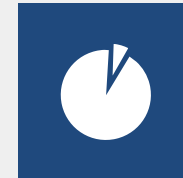


*Flat tumors
not visible*

- Flat tumors may look the same as normal tissues
- White light not effective in visualizing the margins of the tumor



30-year-old
technology



~95%
of market today

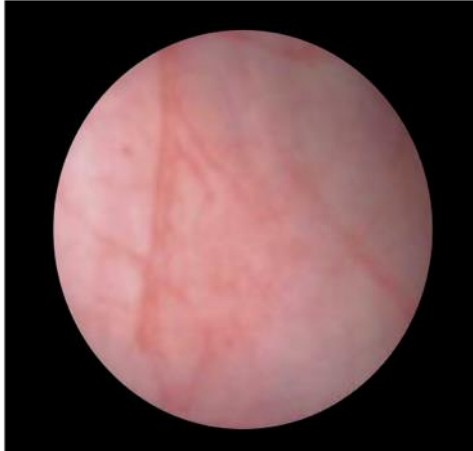


>50%
recurrence rate
in non-muscle

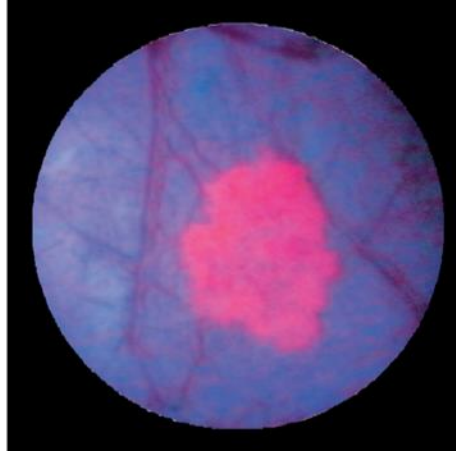
Promising New Modality – Blue Light

Contrast Agents with Blue Filter over White Light, Fluorescence

White Light



Blue Light



Benefits:

- Blue light - excites fluorescence in the tumor, highlighting the cancerous tissue
- Easier to detect flat cancers and visualize margins

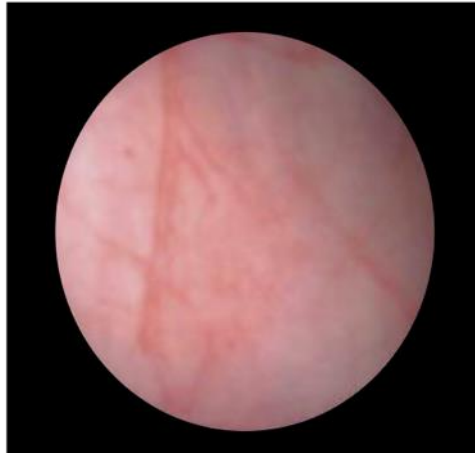
Key Message: Market Development Underway

- Published data supports 25% more tumors, 33% more carcinoma in situ (CIS) found
- Blue light added to American Urology Association (AUA) Guidelines
- Re-imbursement codes in place

The Challenges: Today's Blue Light

Surgeons Can View Only One Image at a Time

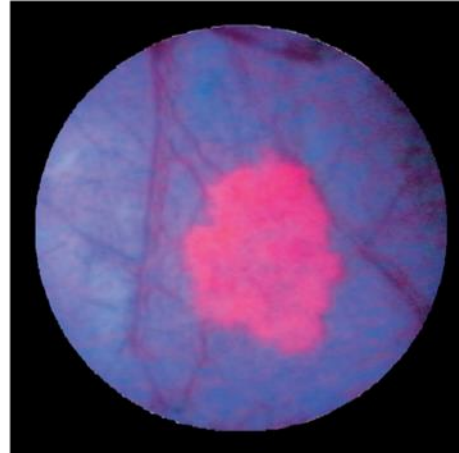
White Light



White light image shows the full landscape of the bladder... but does not highlight cancer



Blue Light



Blue light, excellent job highlighting cancerous tissues in the bladder

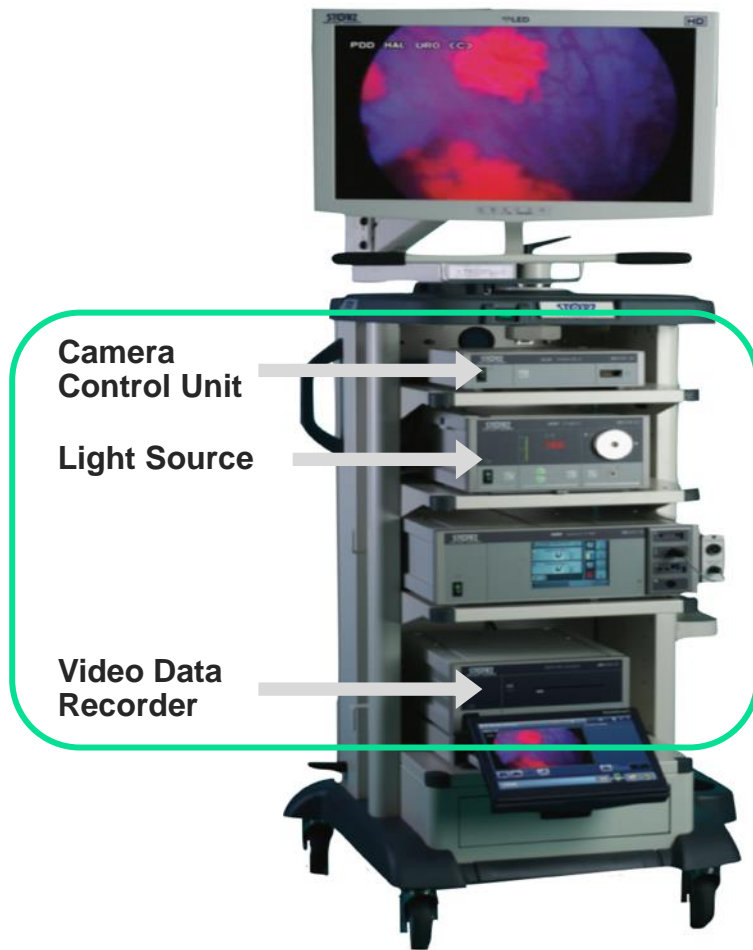
Limitations

- Surgeons cannot operate using the blue light image
 - Blue image not in real-time, may lose orientation in bladder
 - Surgeon must manually “switch” between two different images
-
- Today's Blue light exclusively available from only one scope manufacturer

Imagin i/Blue Imaging System

Corrects Limitations of Today's Blue Light

Today's Blue Light Equipment



i/Blue Imaging System



Advanced Technology

- Simultaneous acquisition of white and blue light images
- Camera head designed to work with most scopes on market

i/Blue System Control Unit

State-of-the-art Key Component

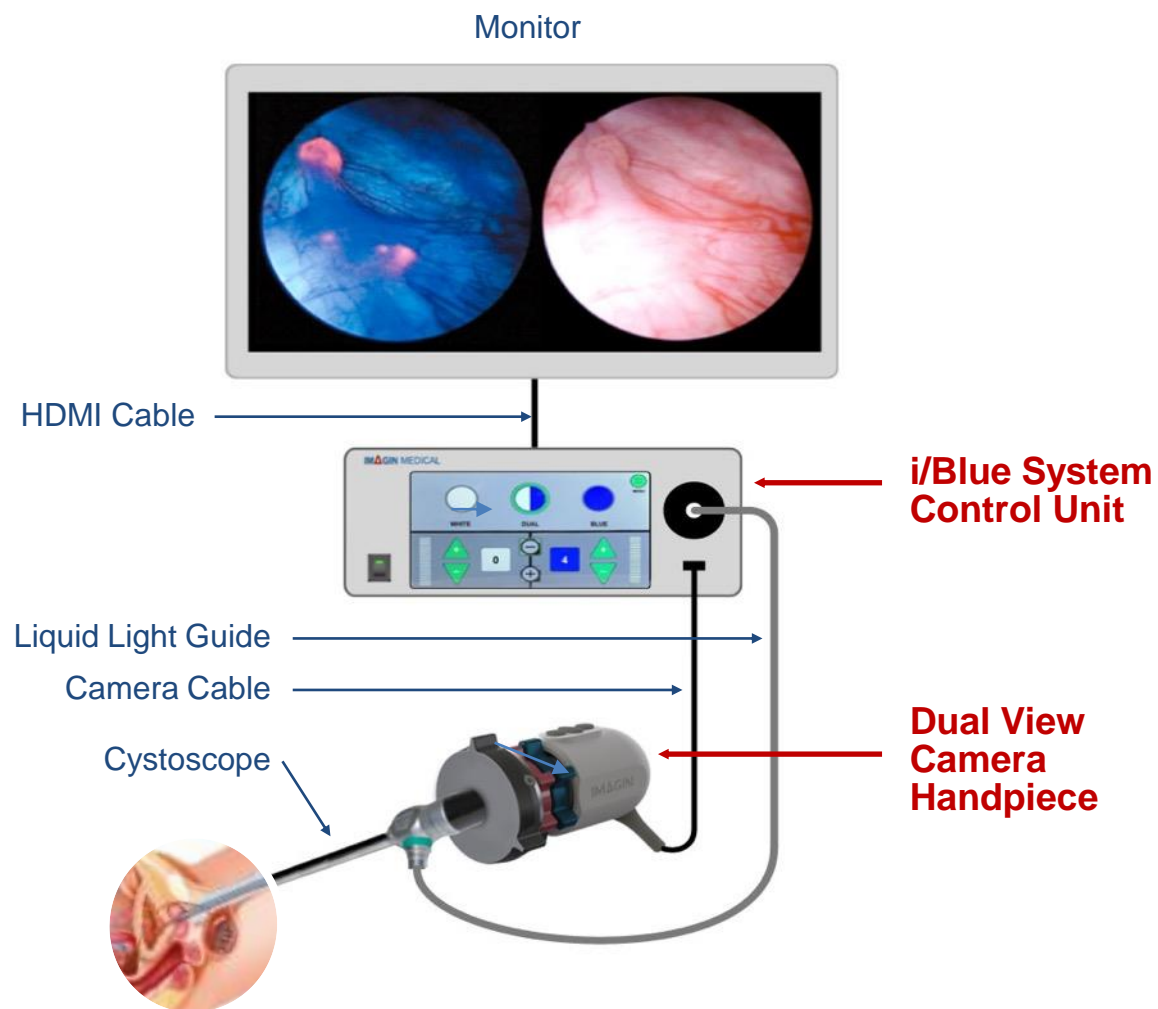


Benefits:

- Dual wavelength light source, two-channel camera control unit, data recorder and power supply
- Simultaneously displays white and blue light illumination to the interior of the bladder

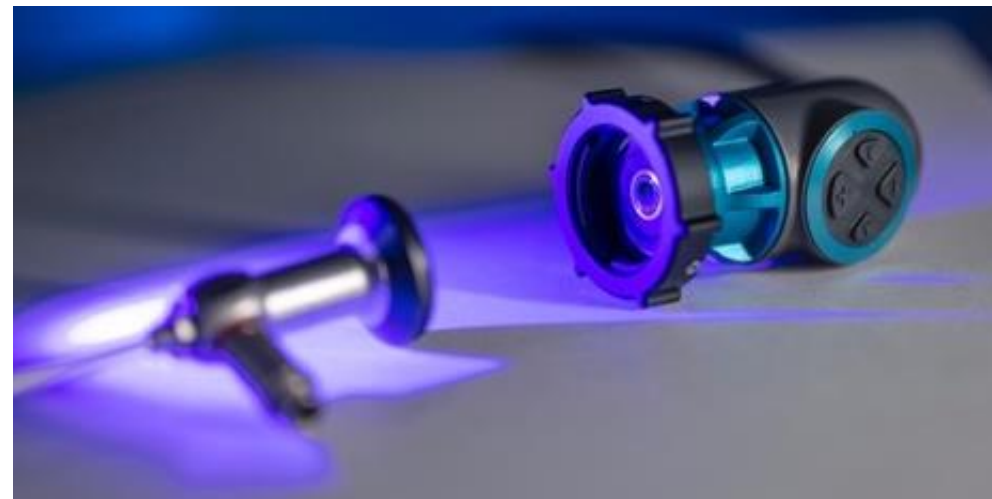
Dual View Camera Head

State-of-the-art Key Component



Benefits:

- Sophisticated optical filters split the image into white light and blue light channels
 - Simultaneous display of white and blue light video streams and single frame captures
-
- System agnostic - designed to work with most manufacturers endoscopes



New Standard of Care: i/Blue™ Imaging System*

Making Blue Light Cystoscopy Practical



i/Blue Value Proposition

- **Simultaneous acquisition of differing images**
 - No toggling back and forth
 - Shows cancer in context
 - Enables surgeon to better visualize and resect the cancer
- **DV Camera Head System Agnostic**
 - Today blue light exclusive to only one scope manufacturer



- i/Blue designed to work with most endoscopes on the market
- **Dramatically expands market size**

* Imagin Medical, Inc. is a development stage company and does not currently have any Medical Device Regulatory Approvals or Clearances to market products in any jurisdiction.

Focus Groups, User Needs/Product Validated

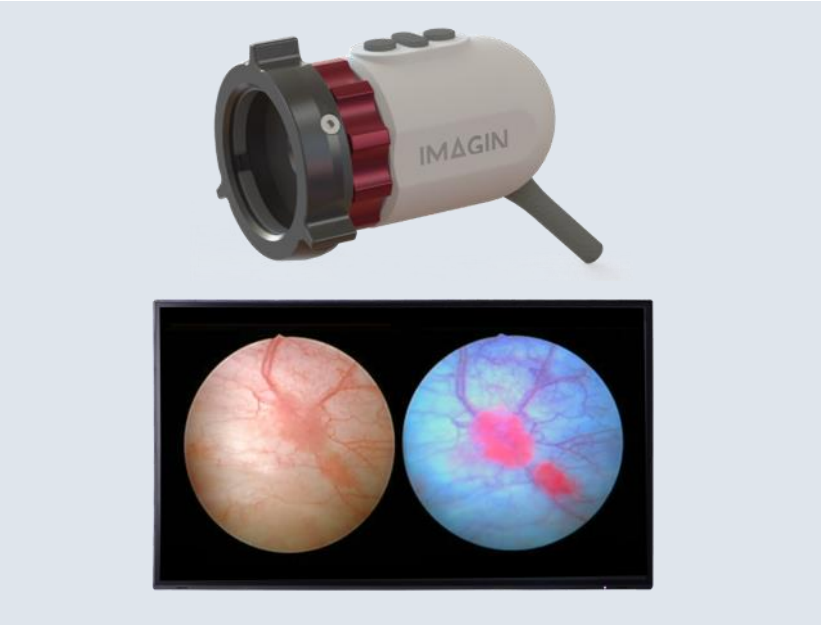
American Urology Association Annual Meeting



Meetings with Clinical Opinion Leaders



System Control Unit



Dual View Camera

Building Imagin Medical

To Success



Regulatory Plan in Place

Process underway, Q-Submission and initial meetings completed



On-Going Development

Expansion/multiple MIS procedures, accommodates multiple contrast agents, i/Vision combines multiple illumination sources



Well Protected Intellectual Property

4 key issued and pending patents



Growth Strategy

Bladder cancer surgery – Bladder cancer fluorescence imaging biopsy. Immediate credibility, independent SR, expand to laparoscopic surgery



Strong Management Team

Experienced group that has done it before

Experienced Management Team

Strong Boston-based Management Team That Has Done It Before



John Vacha

Chief Financial Officer



Michael Vergano

Engineer/Operations
Manager



Pam Papineau

Regulatory &
Quality System Manager



Imagin team has brought many new technologies to market, and successfully sold companies.



Strong M&A Environment

If You Can't Beat Them, Buy Them



PINPOINT

- Introduced Q4, 2007
- White light + ICG fluorescence endoscopic system
- Visualization of blood flow and tissue perfusion during surgery
- Ability to **overlay/combine** white light and fluorescence imaging in real time



System 1588

- Introduced Q1, 2016
- White light + ICG fluorescence endoscopic system
- Visualization of blood flow and tissue perfusion during surgery
- Surgeons need to **toggle** back and fourth between white light and fluorescence image



June 2017: “Stryker Corp. to acquire Novadaq Technologies for \$701 million”

Financial Highlights

- Liquidity and share capital
CSE: IME; OTCQB: IMEXF

Current Share Structure

Share Class (as of 11/01/2020)	# of Shares
Common Shares	8,917,008
Warrants Outstanding*	1,966,790
Options Outstanding	535,000
Fully Diluted Shares Outstanding	11,418,798

Insider Ownership

Shares Held by Insiders	515,417
Insider Ownership	5.78%

US \$ Equivalents

Jan 2022: 1,966,790 @ \$2.20 = \$4.3M



In Summary

Key Investment Risks Removed, High Investment Return

Innovation changes medical practice

Medical markets evolve when advanced technology becomes available, physicians recognize the need for improvement and patients demand it.

White Light



Today's Blue Light



i/Blue Imaging System



Disruptive Imaging Technology

Mitigated R&D Risk

Experienced Management Team

Strong M&A Market

Thank You!

CONTACT INFORMATION:

Jim Hutchens

President & CEO

(617) 571-6006

jhutchens@imaginmedical.com

